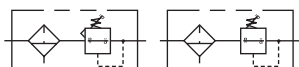


12E Filter / Regulator – Coalescing

- Space saving package offers both coalescer and regulator features for optimal performance
- Removes liquid, aerosol and sub-micron particles
- Rolling diaphragm for extended life
- Removable non-rising knob for panel mounting and tamper resistance
- Quick response, and accurate pressure regulation regardless of changing flow or inlet pressure
- Two high flow 1/4" gauge ports can be used as additional outlets
- 1/2", 3/4" ports (NPT)



Operating information

Supply pressure (max):		
Metal bowl		0 to 250 psig (0 to 17.2 bar)
Operating temperature:		
Metal bowl		32°F to 175°F (0°C to 80°C)
Secondary pressure range:		
Standard		2 to 125 psig (0 to 8.6 bar)
Low		1 to 60 psig (0 to 4.1 bar)
High		5 to 250 psig (0.4 to 17.2 bar)
Flow capacity†:		
High flow	1/2"	40 scfm (18.9 dm³/s, ANR)
	3/4"	45 scfm (21.2 dm³/s, ANR)
Bowl capacity:		
		7.2 oz.
Gauge ports (2):		
		1/4 inch (can be used as additional full flow 1/4" outlet ports)
Sump capacity:		
		2.8 oz.
Weight:		
		2.5 lb (1.1 kg)

† scfm = Standard cubic feet per minute at 150 psig inlet, 90 psig no flow secondary setting and 10 psig pressure drop.

Ordering Information:

Port Size	Description †	Part Number
1/2"	Metal Bowl, Twist Drain, Grade 6 (0.01), 2-125 psi w/out Gauge, Relieving	12E33E13AA
1/2"	Metal Bowl, Twist Drain, Grade 6 (0.01), 2-125 psi w/ Gauge, Relieving	12E33E18AA
1/2"	Metal Bowl, Auto Float Drain, Grade 6 (0.01), 2-125 psi w/ out Gauge, Relieving	12E37E13AA
1/2"	Metal Bowl, Auto Float Drain, Grade 6 (0.01), 2-125 psi w/ Gauge, Relieving	12E37E18AA
3/4"	Metal Bowl, Twist Drain, Grade 6 (0.01), 2-125 psi w/ Gauge, Relieving	12E43E18AA

† For polycarbonate bowl, see caution in Engineering Section A.

NOTE: 2.0 Dia. (50.8 mm) hole required for panel mounting. Max panel thickness 1/4"

 Most popular.



For inventory, lead times, and kit

E33

Parker Hannifin Corporation
Pneumatic Division

Prep-Air® II
Products



Filters

Coalescers

Regulators

Filter /
Regulators

Lubricators

Combinations

Accessories

Material Specifications

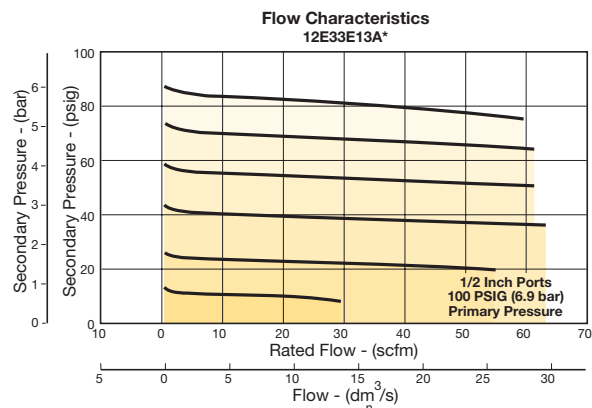
Adjusting stem	Steel
Body	Zinc
Bonnet, internal parts	Plastic
Metal bowl (without sight gauge)	Zinc
Collar for bonnet	Metal
Control spring	Steel
Diaphragm	Nitrile
Manual twist drain, standard, body & nut	Plastic
Auto float drain, housing, float	Plastic
Auto float drain, seals	Nitrile
Auto float drain, springs, push rod	Stainless steel
Knob	Plastic
Element	Borosilicate & felt glass fibers
Seals	Nitrile
Sight gauge	Polyamide
Poppet, spring	Stainless

Repair and Service Kits

Bonnet assembly kit	PS715P
Metal bowl, auto float drain	PS826P
Metal bowl, twist drain	PS834P
Control knob	P04069B
Auto float drain	PS506P
Twist drain	PS512P
Grade 6 element (0.01 micron)	PS884P
Grade 10 element (1.0 micron)	PS885P
2" dial face 60 psig (0 to 4.1 bar), gauge	K4520N14060
2" dial face 160 psig (0 to 11.0 bar), gauge	K4520N14160
2" dial face 300 psig (0 to 20.7 bar), gauge	K4520N14300
1-3/4" digital round face 160 psig (0 to 11.0 bar), gauge	K4517N14160D
Mounting bracket kit (includes panel mount nut)	PS807P
Relieving (includes poppet)	PS886P
1- 30 psig spring	P01698
1- 60 psig spring	P04062
2- 125 psig spring	P04063
5- 250 psig spring	P04064
Tamperproof kit (key lock)	PS737P

Flow Charts

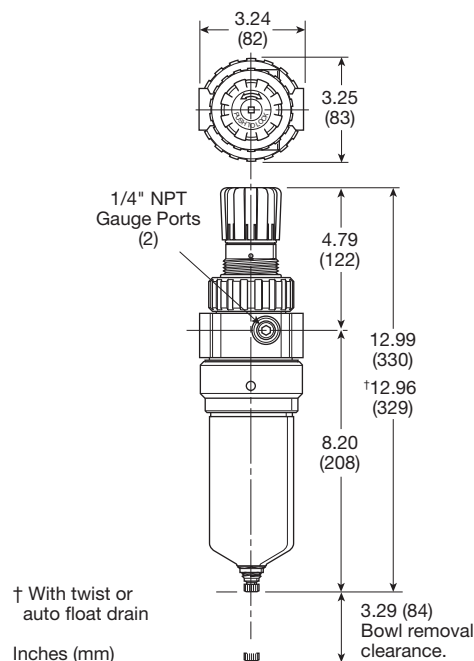
12E 1/2" Filter / Regulator

**WARNING**

**Product rupture can cause serious injury.
Do not connect regulator to bottled gas.
Do not exceed Maximum primary pressure rating.**

CAUTION:

REGULATOR PRESSURE ADJUSTMENT – The working range of knob adjustment is designed to permit outlet pressures within their full range. Pressure adjustment beyond this range is also possible because the knob is not a limiting device. This is a common characteristic of most industrial regulators, and limiting devices may be obtained only by special design. For best performance, regulated pressure should always be set by increasing the pressure up to the desired setting.



For inventory, lead times, and kit